

## Confirmation Worksheet – Church History

### Scotland United Church of Christ

Rev. Elmer Bettenhausen

Rev. John Sattler

Ward Memorial Congregational

First Congregational of Scotland

Worms German Congregational

Petersburg Congregational

Hoffnung Reformed Church

1876

1945

Rev. Dale Krampe

Rev. Jacob Orth

Heidelberg Catechism

Odessa Reformed Church

Neuburg German Congregational

Simentahl German Congregational

Hoffnungstal German Congregational

1884

1950

Rev. Henry Hetzler

Sarah Francis Ward

Congregational Catechism

Bethany Reformed Church

First Congregational of Kaylor

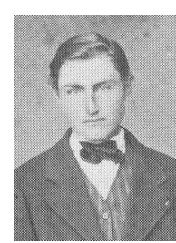
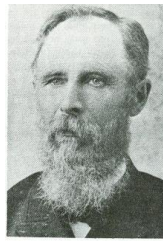
Tyndall German Congregational

United Church of Christ

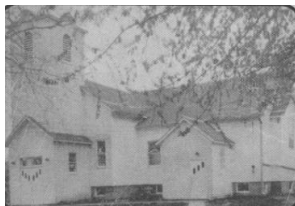
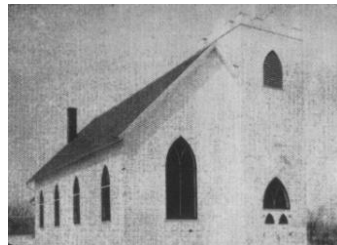
1890

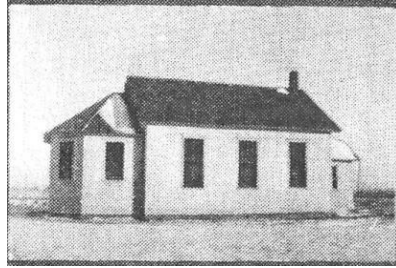
1963

1.) Name these founding pastors:



2.) Which Church is which? Name our predecessor church that belongs to each picture:





3.) On April 6, \_\_\_\_\_ the \_\_\_\_\_ of Scotland, South Dakota was formed from a merger of three German Congregational churches ( \_\_\_\_\_, \_\_\_\_\_, and \_\_\_\_\_) and one congregation from the German Reformed Church tradition ( \_\_\_\_\_). The first pastor to serve this united Reformed and German Congregational parish was \_\_\_\_\_.

4.) In \_\_\_\_\_ a school teacher from Worms, Russia, named \_\_\_\_\_ who had been ordained by the Reformed Church in the United States, founded a number of German Reformed congregations in the Scotland/Menno area. Two of those churches \_\_\_\_\_ in Scotland and \_\_\_\_\_ southeast of Scotland, merged in 1924 as the \_\_\_\_\_. A third Reformed Church from the Scotland Reformed Charge eventually merged with this church in 1934. It was called \_\_\_\_\_.

5.) The \_\_\_\_\_ was used along with the Bible as the primary tool for teaching the faith among the German Reformed churches.

6.) Rev. Orth, who died from pneumonia in 1883, is buried in a cemetery next to one of our predecessor congregations called \_\_\_\_\_.

7.) In \_\_\_\_\_ a German Congregational pastor named \_\_\_\_\_ started five German Congregational Churches in the Scotland area. They were called \_\_\_\_\_ in Scotland, \_\_\_\_\_ southeast of Scotland, \_\_\_\_\_ southwest of Scotland, \_\_\_\_\_ north of Kaylor and \_\_\_\_\_ northeast Kaylor. These formed the Scotland German Congregational Parish.

8.) Another German Congregational church planter was named \_\_\_\_\_. He served two churches that are also part of our heritage. In 1894 he became pastor of the \_\_\_\_\_ Church in Tyndall, which had been organized by Rev. W. J. Schmalle, the third pastor of the Scotland Congregational Parish. This church merged with the Neuburg Congregational Church in 1927. In 1896 He also founded the \_\_\_\_\_ Church in rural Lesterville which merged with the Petersburg Congregational Church in 1929.

9.) In \_\_\_\_\_, a missionary from Yankton College named \_\_\_\_\_ took over pastoral leadership of a tiny independent church in Lesterville, that had been originally founded in 1888 by Rev. Joseph Lee. She led the tiny church in worship at a bar, a railroad station, and finally in their own church building constructed in 1891. This church was called \_\_\_\_\_ after her death and became part of the English Congregational Church movement. It merged with our congregation in 1983.

10.) In 1904 the General Conference of the German Congregational Church published a resource to help teach the faith. It was called the \_\_\_\_\_ and was adopted by all of the Scotland area German Congregational churches.

11.) In \_\_\_\_\_ the Simentahl Congregational Church and the Hoffungstal Congregational Church merged to form the \_\_\_\_\_.

12.) In \_\_\_\_\_ the \_\_\_\_\_ merged with the First Congregational Church of Scotland.

13.) Part of the agreement between the German Congregational and German Reformed churches that formed our present congregation in 1963 was that the faith traditions of both backgrounds would be taught in confirmation classes. Thus, the \_\_\_\_\_ and the \_\_\_\_\_ remain important in the life of our church today.

14. In 1983, under the pastorate of \_\_\_\_\_ Memorial Tower was constructed to hold the four church bells of our four predecessor congregations that merged in 1963. They help us to never forget our united Reformed and German Congregational heritage.

15. Identify to which founding church the following pictured items once belonged.

